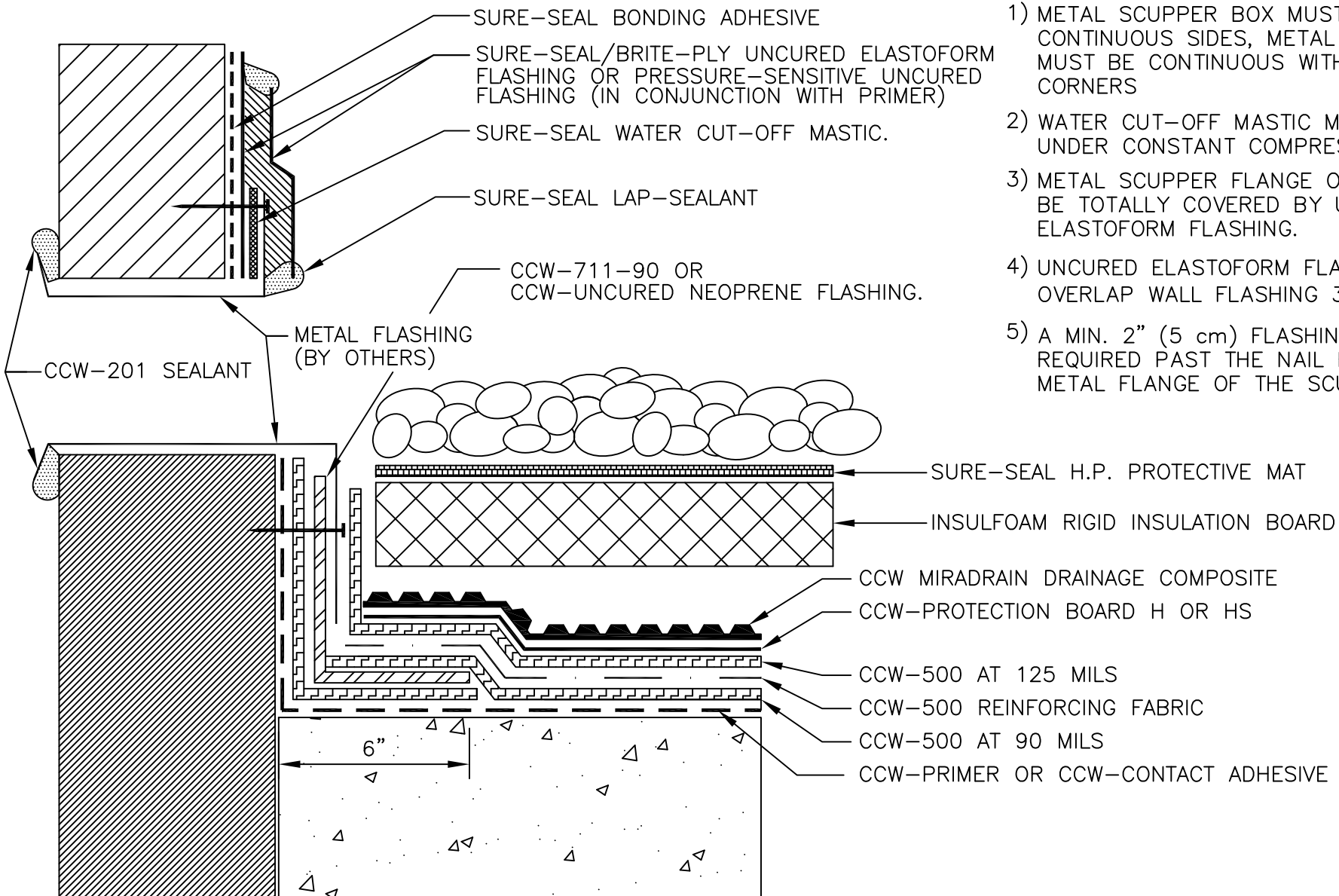


## NOTES

- 1) METAL SCUPPER BOX MUST HAVE CONTINUOUS SIDES, METAL FLANGE MUST BE CONTINUOUS WITH ROUND CORNERS
- 2) WATER CUT-OFF MASTIC MUST BE HELD UNDER CONSTANT COMPRESSION.
- 3) METAL SCUPPER FLANGE ON WALL MUST BE TOTALLY COVERED BY UNCURED ELASTOFORM FLASHING.
- 4) UNCURED ELASTOFORM FLASHING MUST OVERLAP WALL FLASHING 3" (8 cm) MIN.
- 5) A MIN. 2" (5 cm) FLASHING SPLICE IS REQUIRED PAST THE NAIL HEAD ON THE METAL FLANGE OF THE SCUPPER.



500-18B

OVERFLOW METAL  
SCUPPER

**CARLISLE**

© 2011 CARLISLE CORPORATION