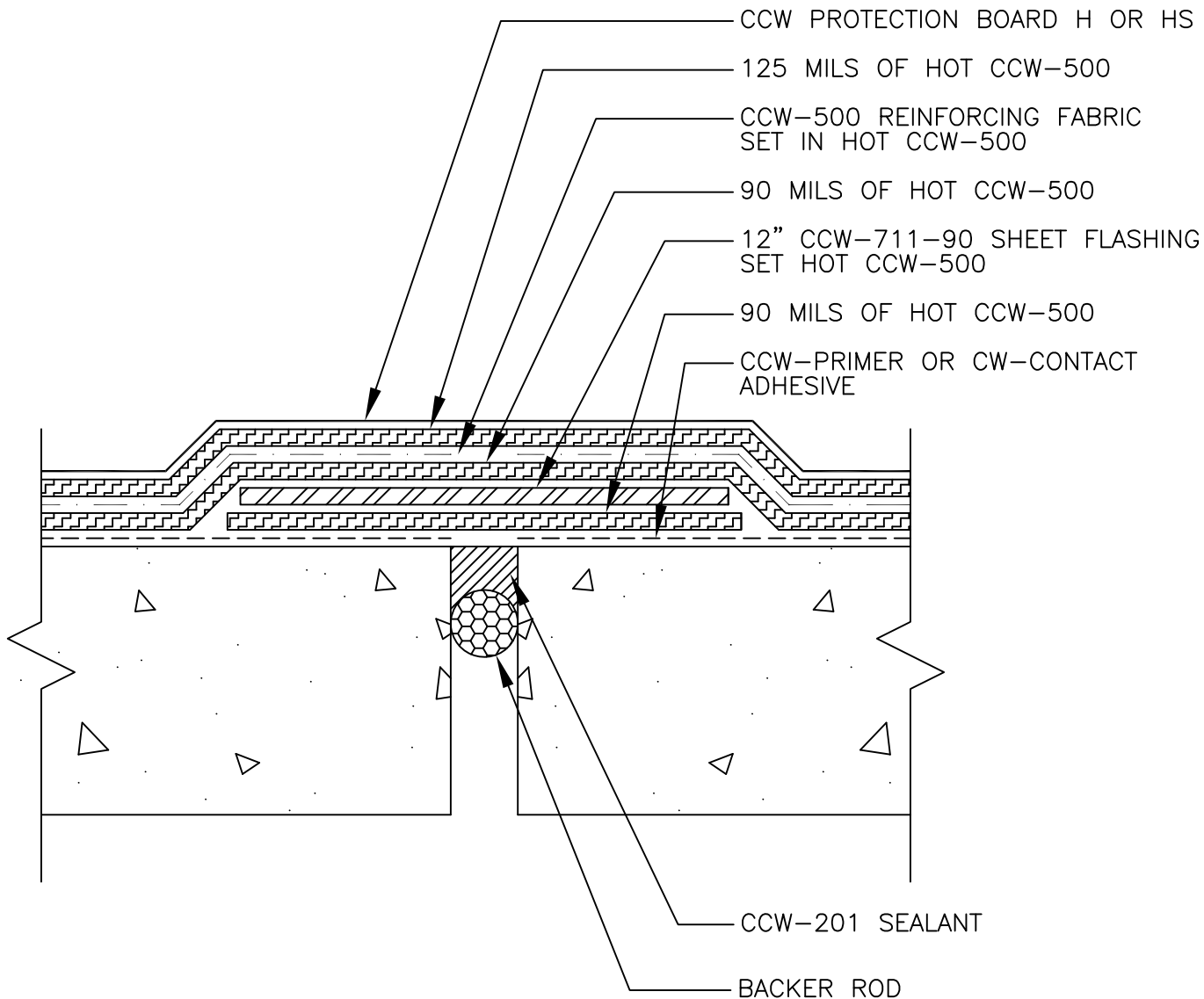


NOTES

- 1) INSTALL BACKER ROD.
(DIA = 1 1/2 X JT WIDTH)
- 2) INSTALL CCW-201 SEALANT.
SEALANT DEPTH SHALL EQUAL
1/2 OF JOINT WIDTH, 1/2" MAX.
- 3) APPLY CCW-PRIMER OR
CCW-CONTACT ADHESIVE AT
MINIMUM OF 8" WIDE ON EACH
SIDE OF JOINT.
- 4) APPLY 90 MILS OF HOT CCW-
500R A MINIMUM OF 8" WIDE
ON EACH SIDE OF JOINT.
- 5) INSTALL 12" WIDTH CCW-711-90
FLASHING SET IN 60 MILS OF
HOT CCW-500.
- 6) APPLY CCW-550 PRIMER.
APPLY CCW-500R 215 MIL
REINFORCED MEMBRANE OVER
THE ENTIRE SURFACE.
(INCLUDING FLASHING)
- 7) INSTALL CCW PROTECTION
BOARD H OR HS
- 8) INSTALL CCW MIRADRAIN



500-3E

1" PRECAST JOINTS
W/ LESS THAN 1/8" MOVEMENT

CARLISLE

© 2011 CARLISLE CORPORATION