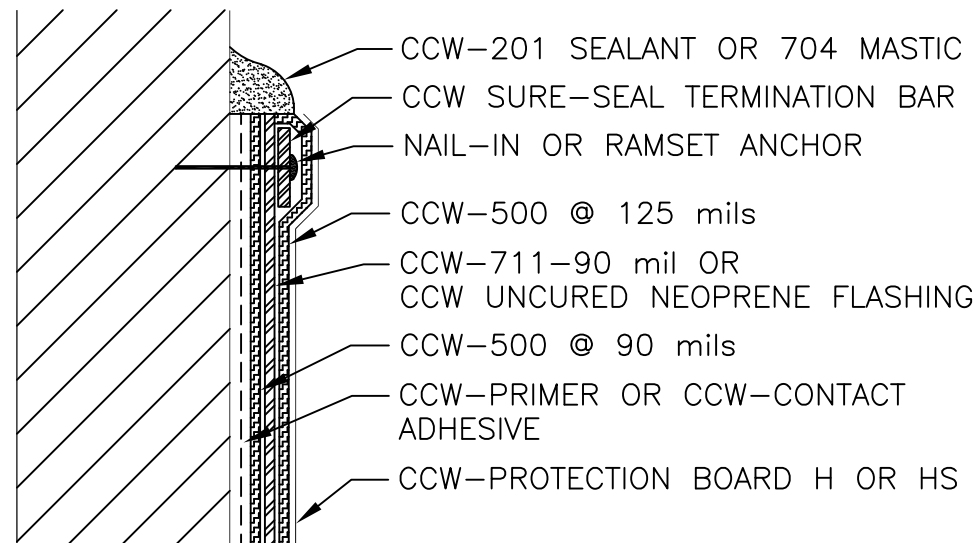


NOTES:

1. FASTEN METAL COUNTERFLASHING TO SUBSTRATE 12 INCHES ON CENTER.
2. IF FASTENER PENETRATES METAL COUNTERFLASHING, USE NEOPRENE WASHER, APPLY WATER CUT-OFF MASTIC OR CAULK FASTENER HEAD.

500-9-C COUNTERFLASHING



NOTES:

1. APPLY ON HARD SMOOTH SURFACE ONLY; NOT FOR USE ON WOOD.
2. FLASHING MUST BE HELD UNDER CONSTANT COMPRESSION.

500-9-D MECHANICAL

500-9CD

VERTICAL TERMINATIONS



© 2011 CARLISLE CORPORATION