

COMPLETE WATERPROOFING ONE COMPANY

CCW provides a complete line of waterproofing solutions and the expertise to help you select the ones that are best for your project.



CCW Deck Coatings



CCW-500R



Barricoat™-S



CCW MiraDR1® 860/86I



CCW MiraDRAIN®



Air & Vapor Barrier Systems



CCW 525

CCW WEB

Visit Our Web Site at
www.carlisle-ccw.com

- Updates
- Data Sheets
- Contacts
- Guide Specifications
- Architectural Details
- Technical Bulletins

LIMITED WARRANTY

Carlisle Coatings & Waterproofing, Incorporated (Carlisle) warrants this product to be free of defects in workmanship and materials only at the time of shipment from our factory. If any Carlisle materials prove to contain manufacturing defects that substantially affect their performance, Carlisle will, at its option, replace the materials or refund its purchase price.

This limited warranty is the only warranty extended by Carlisle with respect to its materials. There are no other warranties including the implied warranties of merchantability and fitness for a particular purpose.

Carlisle specifically disclaims liability for any incidental, consequential or other damages including, but not limited to, loss of profits or damages to a structure or its contents arising under any theory of law whatsoever.

The dollar value of Carlisle's liability and buyer's remedy under this limited warranty shall not exceed the purchase price of the Carlisle material in question.

900 Hensley Lane • Wylie TX 75098
800-527-7092 • www.carlisle-ccw.com



CCW MIRACLAY®
Bentonite Clay Waterproofing System

C A R L I S L E C O A T I N G S & W A T E R P R O O F I N G



800.527.7092 | www.carlisle-ccw.com



CCW MiraCLAY Bentonite Clay Waterproofing System

Carlisle Coatings & Waterproofing, Inc. (CCW) provides a broad range of solutions to meet specific waterproofing needs. CCW offers technical services, research & development and manufacturing capabilities from its headquarters in Wylie, Texas and three additional manufacturing facilities in Terrell, TX, Elberton, GA, and Carlisle, PA. The CCW network is further supported by over 50 manufacturer's sales representatives directed by regional sales offices throughout the country. CCW offers a complete line of waterproofing and moisture protection products for the architectural, general construction, industrial and maintenance industries. Carlisle Coatings & Waterproofing, Inc., is part of the SynTec Division of Carlisle Companies, Inc., which is a publicly traded company on the NYSE.

CCW MiraCLAY is a specially constructed system, which utilizes sodium bentonite clay. The CCW MiraCLAY geotextile panel consists of sodium bentonite clay encased between two layers of woven and non-woven, puncture resistant polypropylene fabric. CCW MiraCLAY is needle punched together using the Infrabond™ process.



INFRABOND...
The New CCW MiraCLAY offers significant improvements over traditional bentonite cardboard panels. It combines the latest in geotextile technology with the proven waterproofing capabilities of sodium bentonite. The Infrabond™ process thermally fuses the needle-punched fibers to the polypropylene fabric. This locks the sodium bentonite into place regardless of incline or hydration cycles, providing a permanently bonded membrane.

Granular Sodium Bentonite

Woven Geotextile

Non-Woven Needle Punched Geotextile

In a hydrated state, CCW MiraCLAY has low permeability and high resistance to chemicals. CCW MiraCLAY is ideal for property line or lagging applications when used in combination with CCW MiraDRAIN 6000/6000XL.

CCW MiraCLAY's accessory products, CCW MiraCLAY Granules, CCW MiraSTOP and CCW LM-800XL, complete the system by sealing cracks, gaps and overlaps.

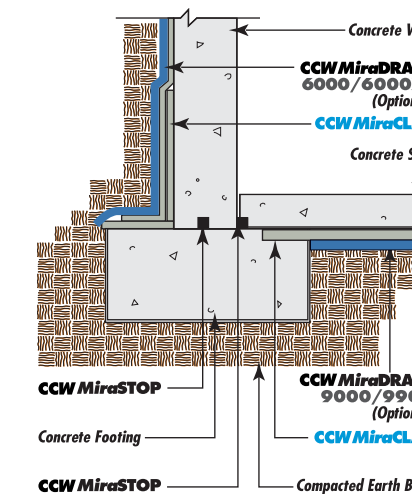
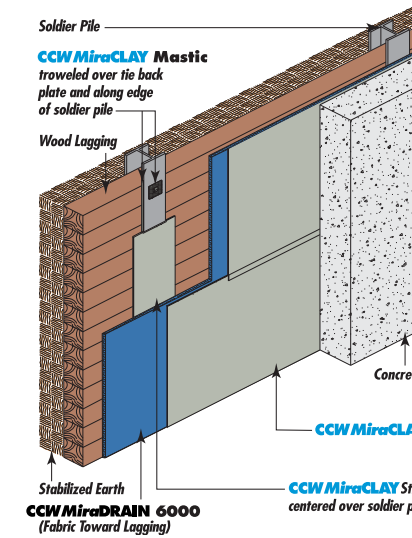
CCW'S MIRACLAY WATERPROOFING SYSTEM

- CCW MiraCLAY
- CCW MiraDRAIN
- CCW MiraCLAY Mastic
- CCW MiraSTOP
- CCW MiraCLAY Granules

Use CCW MiraCLAY EF for salt water and contaminated project sites. Contact your local Carlisle Coatings & Waterproofing representative for warranty information.

CCW MIRASTOP

Concrete structures are only as watertight as the waterstops that join them. CCW MiraSTOP is a flexible, coiled strip of butyl rubber and expandable bentonite clay waterproofing joint compound. When it comes in contact with water it swells to form a strong compression seal.



GENERAL SPECIFICATIONS

Physical Property		
Bentonite Content		1.0 lb/ft ² (4.88 kg/m ²) min. @ 12% moisture content
Normal Dry Thickness		0.25 in (6.4mm)
Sheet Dimensions		4.5' x 15.5' (1.37m x 4.72m)
		15.5' x 125' (4.72m x 68.58m) available upon request
Weight		79 lb (35.8 kg) small sheet
		2195 lb (995.65 kg) large sheet
Performance Characteristic		
Permeability	ASTM D5084	5 x 10 ⁻⁹ cm/sec max.
Grab Tensile Strength	ASTM D4632	95 lb (422 N)
Grab Elongation	ASTM D4632	150%
Hydrated Internal Shear	ASTM D5321	500 psf (24 kPa)
Swell Index	ASTM D5890	2g (24 ml) min.
Fluid Loss	ASTM D5891	18 ml max.
Adhesion to Concrete	ASTM D903	17.7 lb/in (8 kg/cm)
Low Temperature Flexibility	ASTM D1970	Unaffected @ -25°F (-32°C)
Hydrostatic Head Pressure	ASTM D751	228' (69.49m)

